

Carrier 30 RA 120 0403-EE

Specifications

Brand	Carrier
Type	30 RA 120 0403-EE
Product type	Air Cooled Chiller
Capacity kW	115
Capacity Tons	32,7
Refrigerant	Freon
Refrigerant Type	R407C
Pump	✓
Weight in kg.	1167
Sizes	2270x2070x1330 mm (LxWxH)
Compressor(s) type & model	4x Performer SZ185S4CC
Display	Carrier pro-dialog plus
Number of fans	2
Fan specifications	50 hz - 0,12/0,45/0,9 kW - 300/600/700 RPM
Remarks	y.o.b: 2002
Stock	1

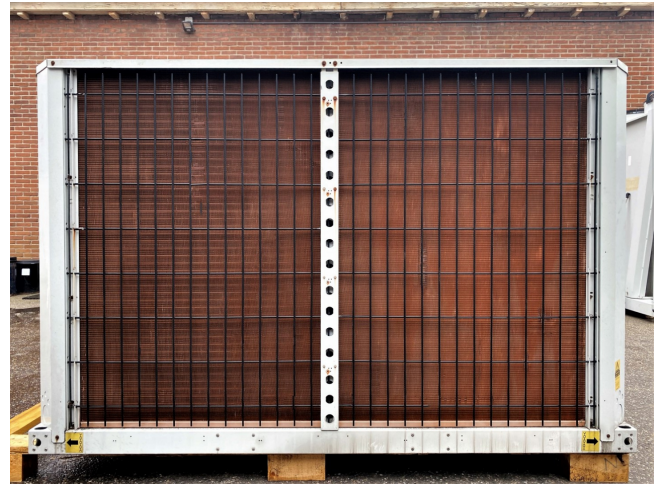


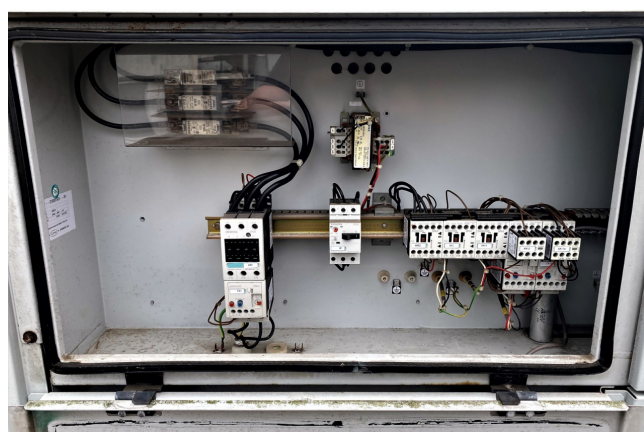
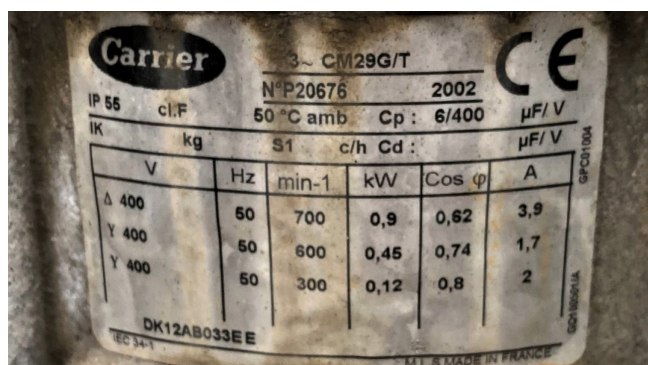
Description

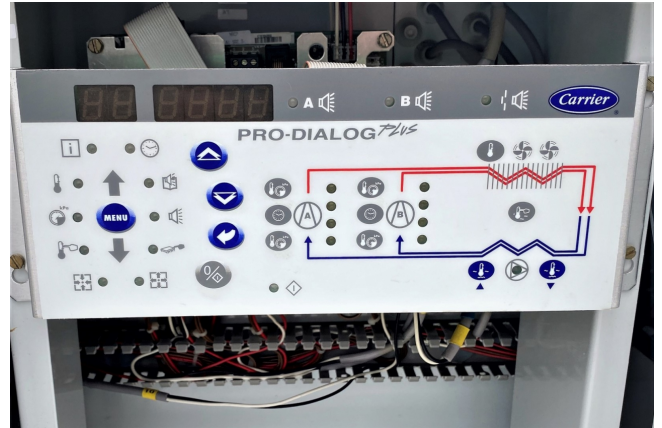
Used Carrier 30 RA 120 0403-EE

Used Carrier 30 RA 120 0403-EE air cooled chiller. Complete with 4 Performer SZ185S4CC compressors. One plate heat-exchanger. Condensor with 2 Carrier axial fans with a total airflow of 8840 l/s and a Pro-dialog plus control panel.

*Why choose for HOSBV? Were not only the largest used refrigeration specialist in Europe, but also, we deliver all equipment solely if it has passed our extensive test. Warranty and industrial cleaning are included in your purchase.
*If requested we are happy to arrange your shipment.







Carrier **Carrier s.a.** B.P. 49
01122 MONTLUEL Cedex - FRANCE
Tél : (country code : 33) 04.72.25.21.21
Télex : 320 196
Télécopy : (country code : 33) 04.72.25.22.51

QUALITY CERTIFICATE CERTIFICAT DE QUALITÉ

This is to certify that the product detailed underneath has been satisfactorily inspected and tested in accordance with the relevant Carrier drawings and specifications.
When referring to this product, please mention model and serial numbers.
Nous certifions que le produit indiqué ci-dessous a été contrôlé et essayé conformément aux plans et spécifications Carrier et que les résultats sont satisfaisants.
Pour toute remarque concernant ce produit, veuillez indiquer ses numéros de modèle et de série.

CAR 1 GAF 026

MODEL - Nr: N° de MODÈLE	33-PA 135-0475-EE	
SERIAL - Nr: N° de SÉRIE	12-222 398	
CONTROL POINTS POINTS DE CONTRÔLE		VISA
PRESSURE TEST AND LEAK TEST TEST DE PRESSION ET DETECTION		
VACUUM AND REFRIGERANT CHARGE TIRAGE AU VIDE ET CHARGE REFRIGERANT		
HIGH POTENTIAL AND RUNNING TEST ESSAI DIELECTRIQUE ET TEST DE FONCTIONNEMENT		
GENERAL INSIDE AND OUTSIDE APPEARANCE ASPECT INTERIEUR ET EXTERIEUR		
NAMEPLATE DATA AND PACKAGING PLAQUE SIGNALÉTIQUE ET EMBALLAGE		
WIRING DIAGRAM N° SCHEMA ELECTRIQUE		

ARRIER.
d in the unit.
ic, part reference.